



SQUARE 3

1 & 2 BED

SUPER LUXURY APARTMENTS

& KING SIZE SHOWROOMS

2.5 YEAR
PAYMENT PLAN

LOCATED NEAR
BAHRIA TOWN HEAD OFFICE



LEVIES BATA ADDIDAS MART KFC

SALES PARTNER



1 BED

453 SQ. FT

2 BED B

671 SQ. FT

2 BED A

904 SQ. FT

PILING COMPLETED

SALES PARTNER



MODERN ARCHITECTURE & A VERY SMALL COMMUNITY



SALES PARTNER





Extremely
well-planned
infrastructure



Adequate
Parking



Smart Lighting
System
in all Apartments



State of the Art
Firefighting system



SCENIC, PREMIUM,
QUIET &
SERENE LIVING

SALES PARTNER



BOOK TODAY

AND MOVE IN
2.5 YEARS

LIMITED NUMBER OF APARTMENTS



24/7 CCTV
FOOL PROOF
SECURITY



HIGH SPEED
LIFTS



RECEPTION
LOBBY



STANDBY
GENERATOR

SALES PARTNER

 **infuse**
Properties

LOCATED IN THE
HEART
OF
BAHRIA TOWN
K A R A C H I

MALIK SQUARE
BAHRIA TOWN HEAD OFFICE
JINNAH AVENUE
MIDWAY COMMERCIAL

SALES PARTNER



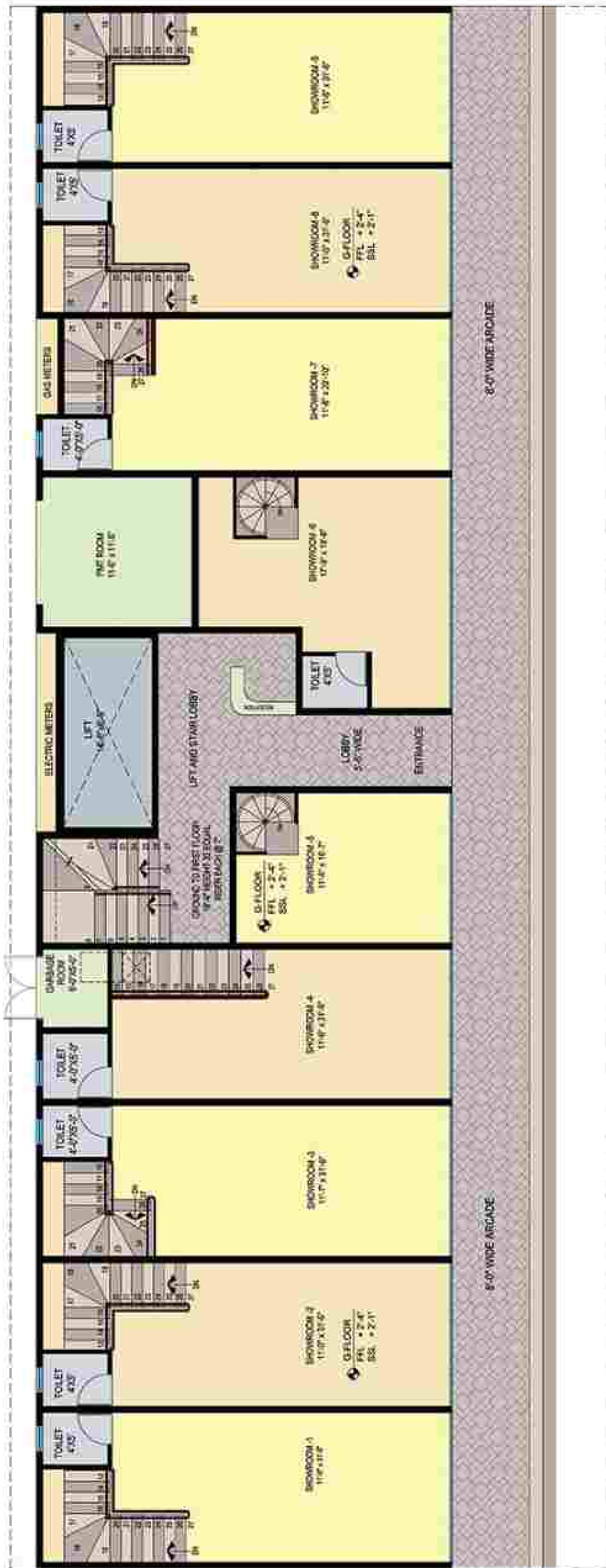
WE BELIEVE OUR ONLY ASSET IS OUR
SATISFIED
CUSTOMERS
WHO HAVE BEEN COMING BACK TO
INVEST
WITH US IN ALL OUR PROJECTS



SALES PARTNER



GROUND FLOOR PLAN

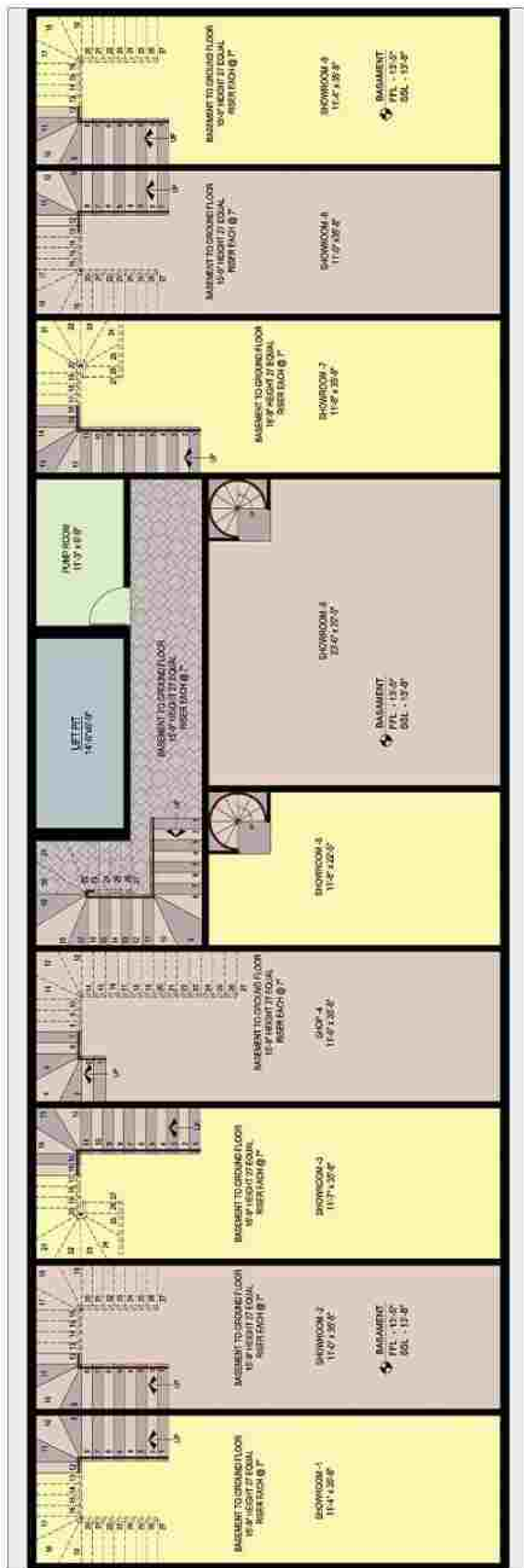


SALES PARTNER



BASEMENT

FLOOR PLAN



SALES PARTNER



2 BED A

FLOOR PLAN



904
SQ.FT.

SALES PARTNER



2 BED B

FLOOR PLAN



671
SQ.FT.

SALES PARTNER



1 BED

FLOOR PLAN

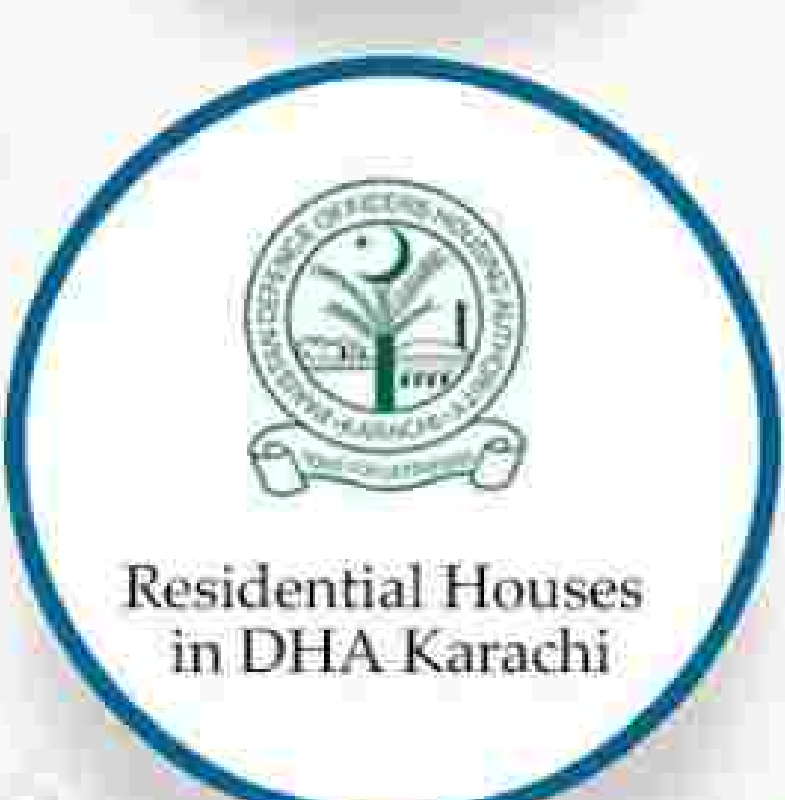


453
SQ.FT.

SALES PARTNER

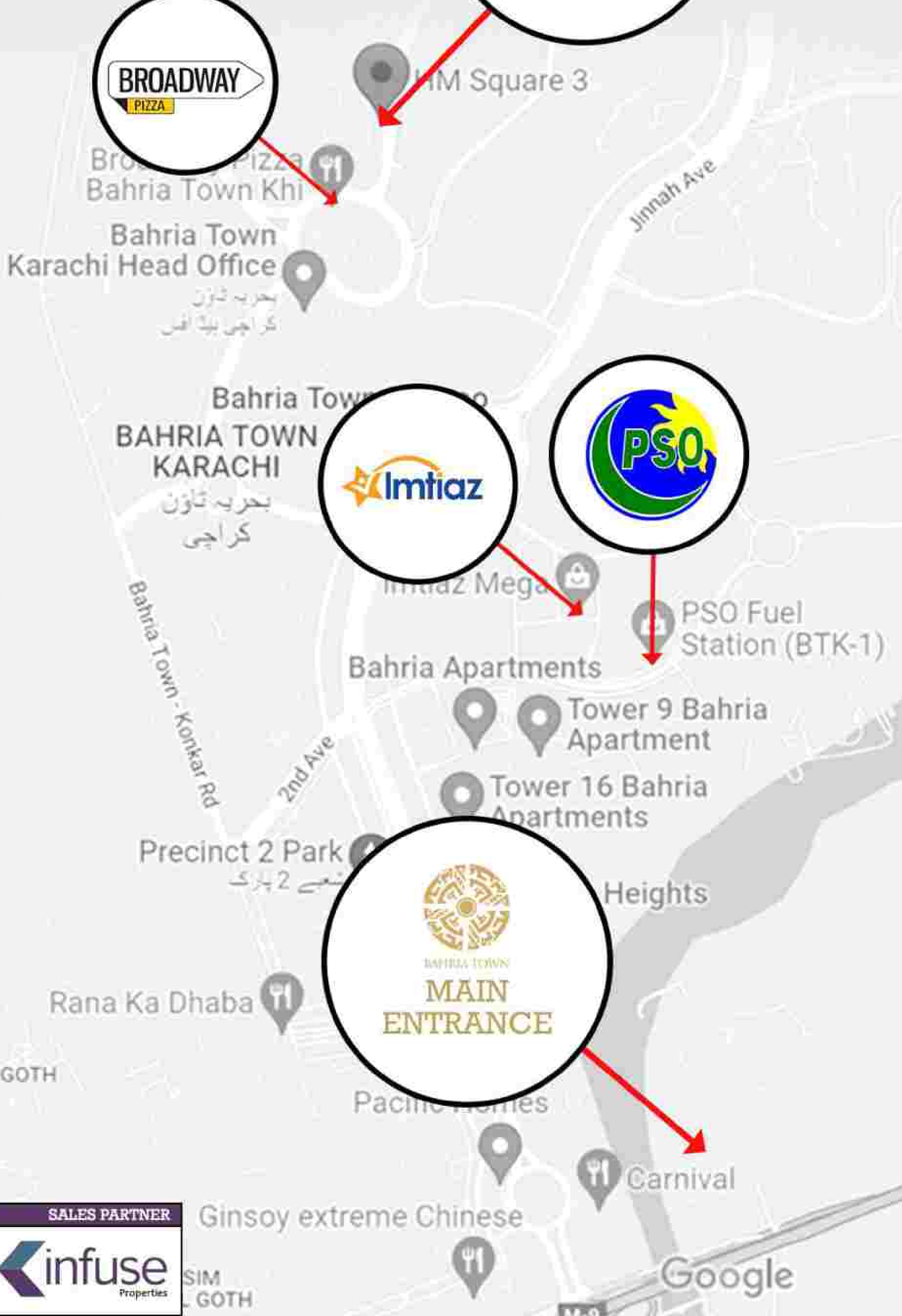
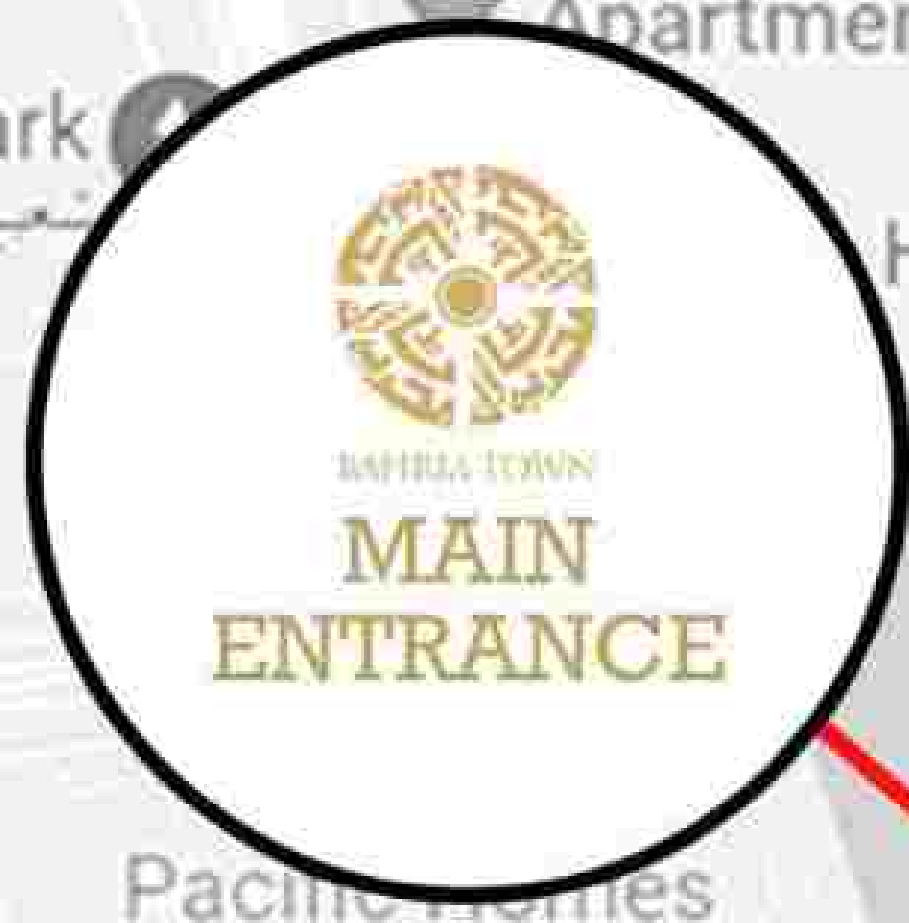


OUR PROJECTS



SALES PARTNER





Google

PAYMENT PLAN

TYPE	3 ROOM A	3 ROOM B	2 ROOM
SIZE (SQ. FT)	904	671	453
BOOKING	668,000	473,667	367,667
ALLOCATION	668,000	473,667	367,667
CONFIRMATION	668,000	473,667	367,667
30 MONTHLY INSTALLMENTS	138,000	102,000	56,400
5 HALF YEARLY INSTALLMENTS	300,000	234,000	180,000
PRE-POSSESSION	472,000	361,750	304,250
POSSESSION	472,000	361,750	304,250
TOTAL	8,588,000	6,374,500	4,303,500



SALES PARTNER



LIVE eVISIT FACILITY AVAILABLE



SALES PARTNER



SALES & CUSTOMER SERVICE

HOTLINE IS AVAILABLE 24/7 FOR OVERSEAS
CUSTOMERS TO ABSORB TIME ZONE
DIFFERENCE



SALES PARTNER



MONTHLY CONSTRUCTION REPORT

WILL BE SHARED WITH ALL CUSTOMERS



SALES PARTNER

